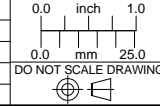


**OUTLINE**

Lens Specifications - NMV-16			
Specifications	Value	2/3"	1/2"
Focal Length	f = 6mm		
Maximum diameter (Ratio)	F = 1.4:1 - 16		
Picture Size	12.8x9.6mm	8.8x6.6mm	6.4x4.8mm
Angle - Vertical	33.6 deg.	23.2deg.	16.9 deg.
Horizontal	44.3 deg.	30.8 deg.	22.5deg.
Diagonal	54.4 deg.	38.3deg	28.1 deg.
Distortion (TV)	-1.0%	-0.7%	-0.4%
Minimum Focus Distance	0.3m		
Flange Back	17.526mm in air		
Back Focus	12.6mm in air		
Filter Screw Size	M35.5x0.5		
Effective Diameter - Front	21.5mm dia.		
- Rear	18.8mm dia.		
Mount	C-Mount		
Exit Pupil	128.5mm dia.		
Temperature Range	- 10 ~ + 45 deg. C		
Strong Temperature Range	- 40 ~ + 60 deg. C		

UNLESS OTHERWISE SPECIFIED DIMENSIONS ARE IN INCHES AND INCLUDE CHEMICALLY APPLIED OR PLATED FINISHES	THE CONTENTS OF THIS DOCUMENT ARE PROPRIETARY TO NAVITAR, ITS USE IS AUTHORIZED ONLY FOR RESPONDING TO REQUEST FOR QUOTATION OR PERFORMANCE OF WORK FOR NAVITAR.
SCALE: 1.5:1	
WEIGHT: See Table	
DR: BE	
CH:	
PROJECT #: E2338	
DATE DR: 7/13/2007	



**NAVITAR**  
ROCHESTER, NEW YORK

LENS, 16.0mm FL, , 1.0", f/1.4

SIZE <b>B</b>	<b>NMV - 16M1</b>	REV <b>A</b>
SHEET 1 OF 1		